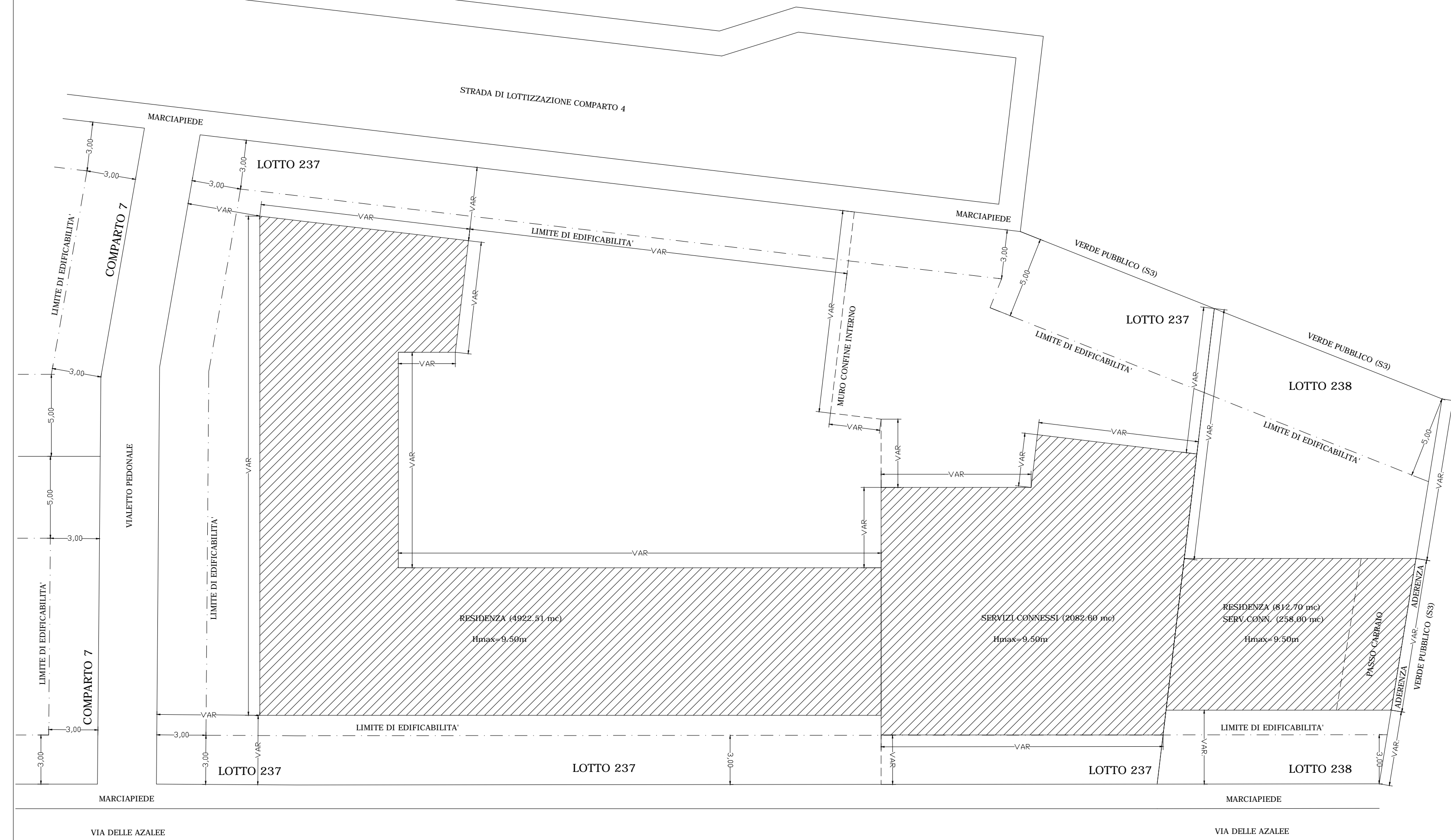
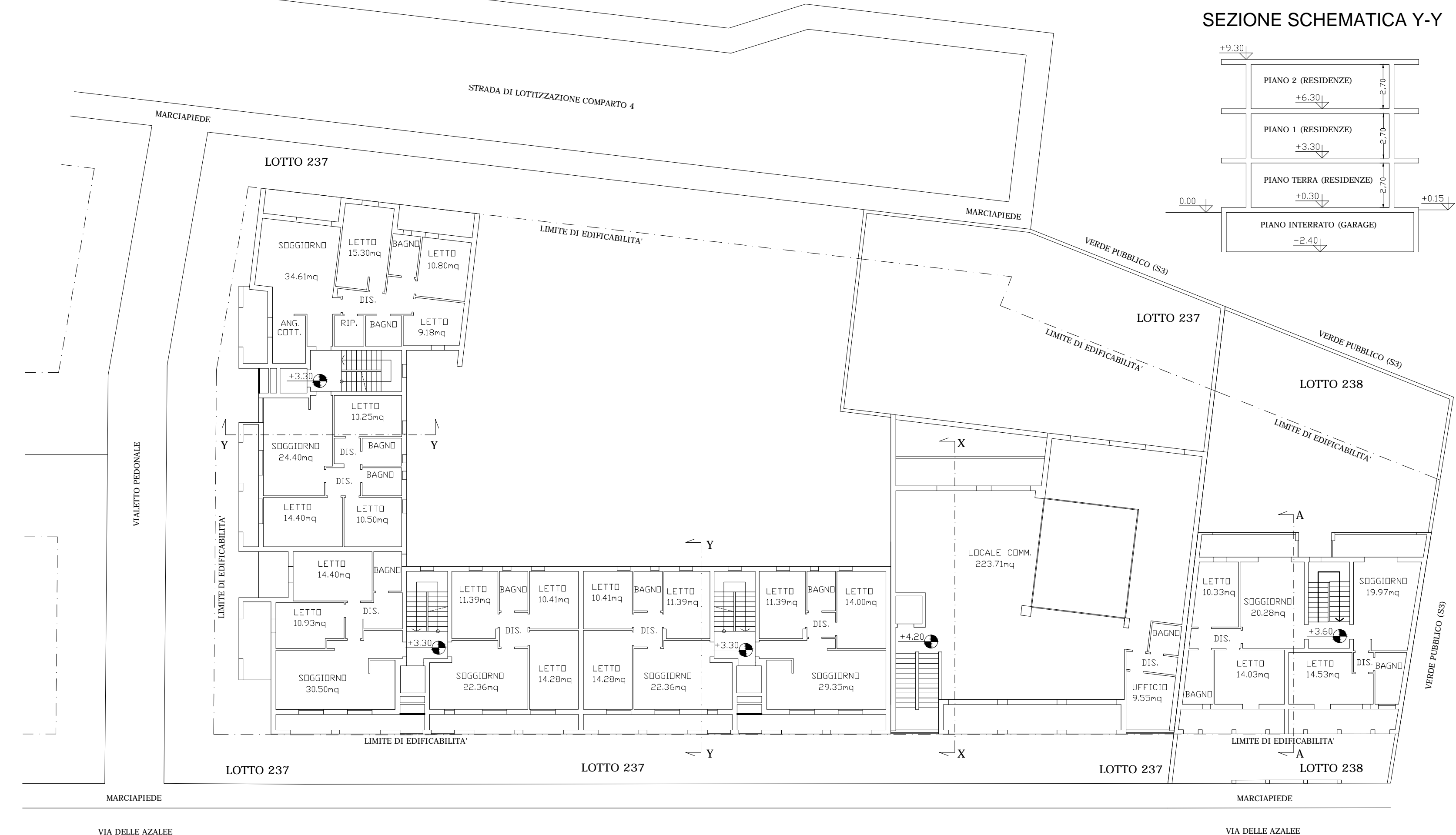


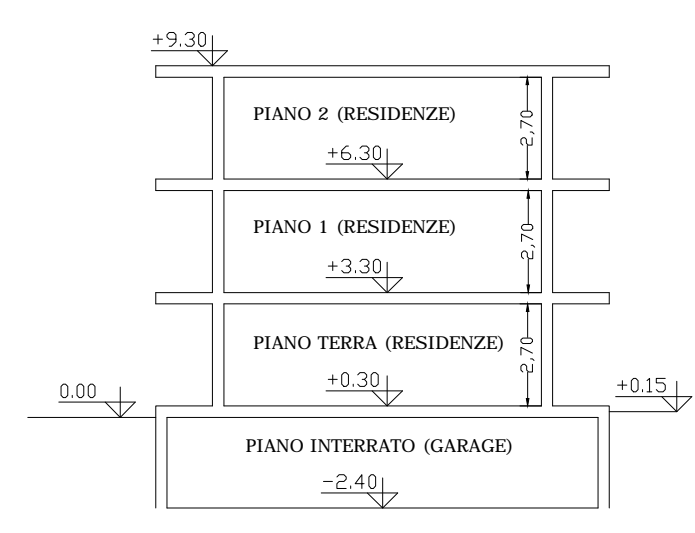
SCHEMA PLANOVOLUMETRICO DEI LOTTI NN. 237-238



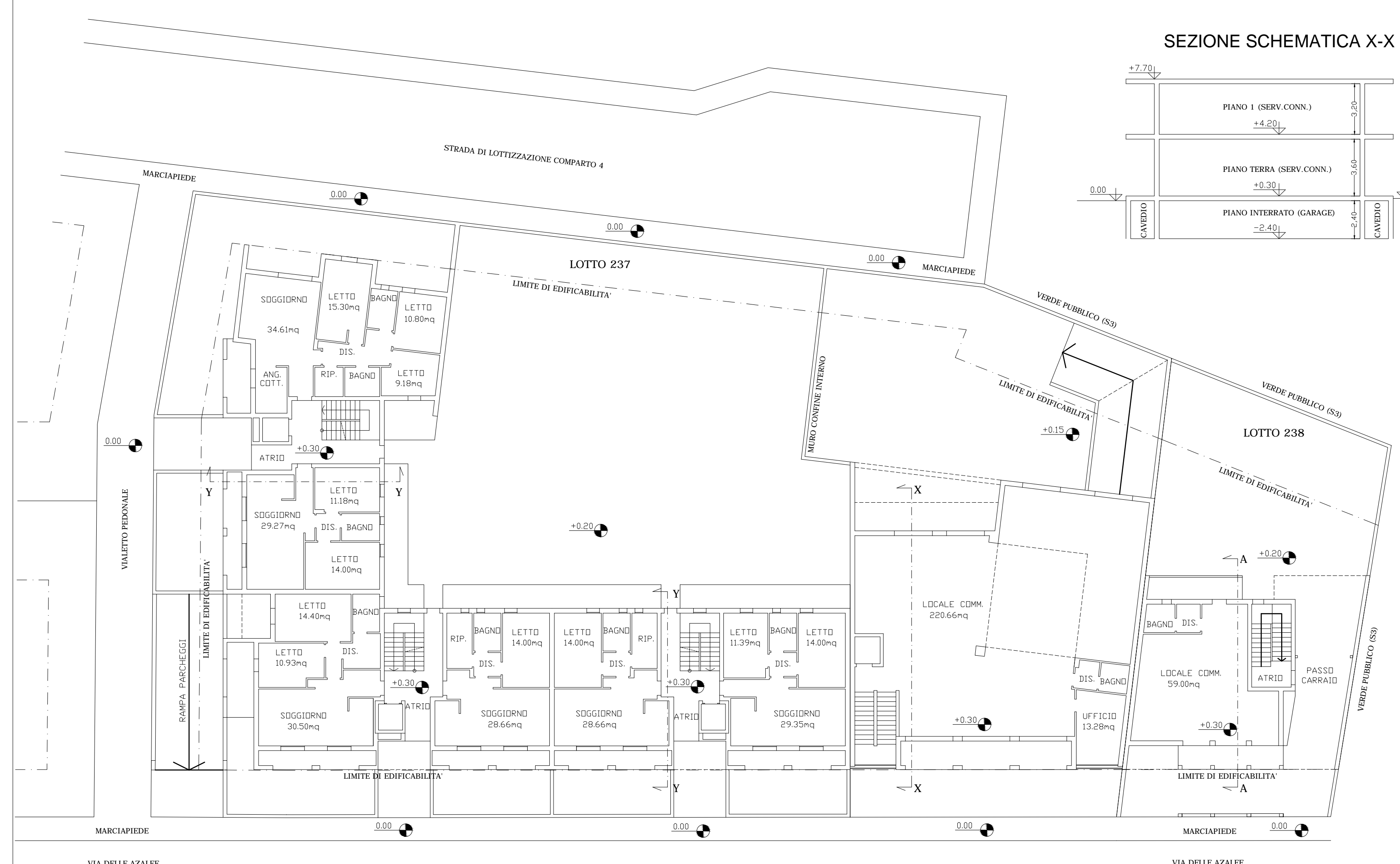
SCHEMA TIPOLOGICO PIANO PRIMO



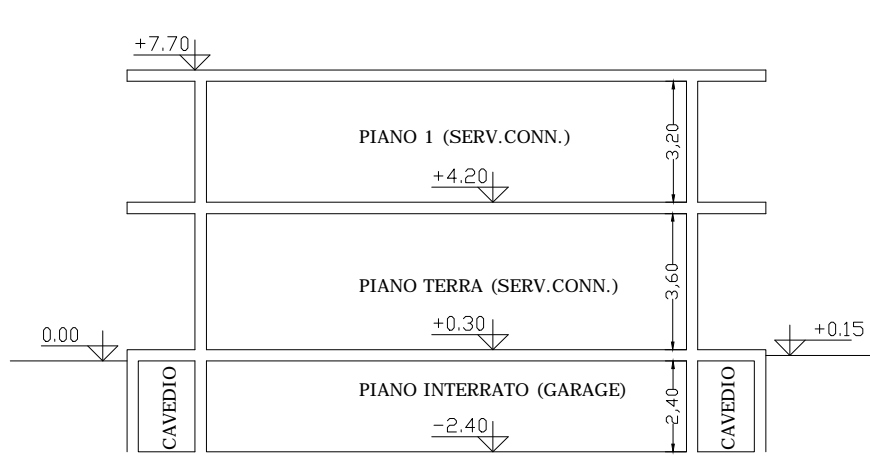
SEZIONE SCHEMATICA Y-Y



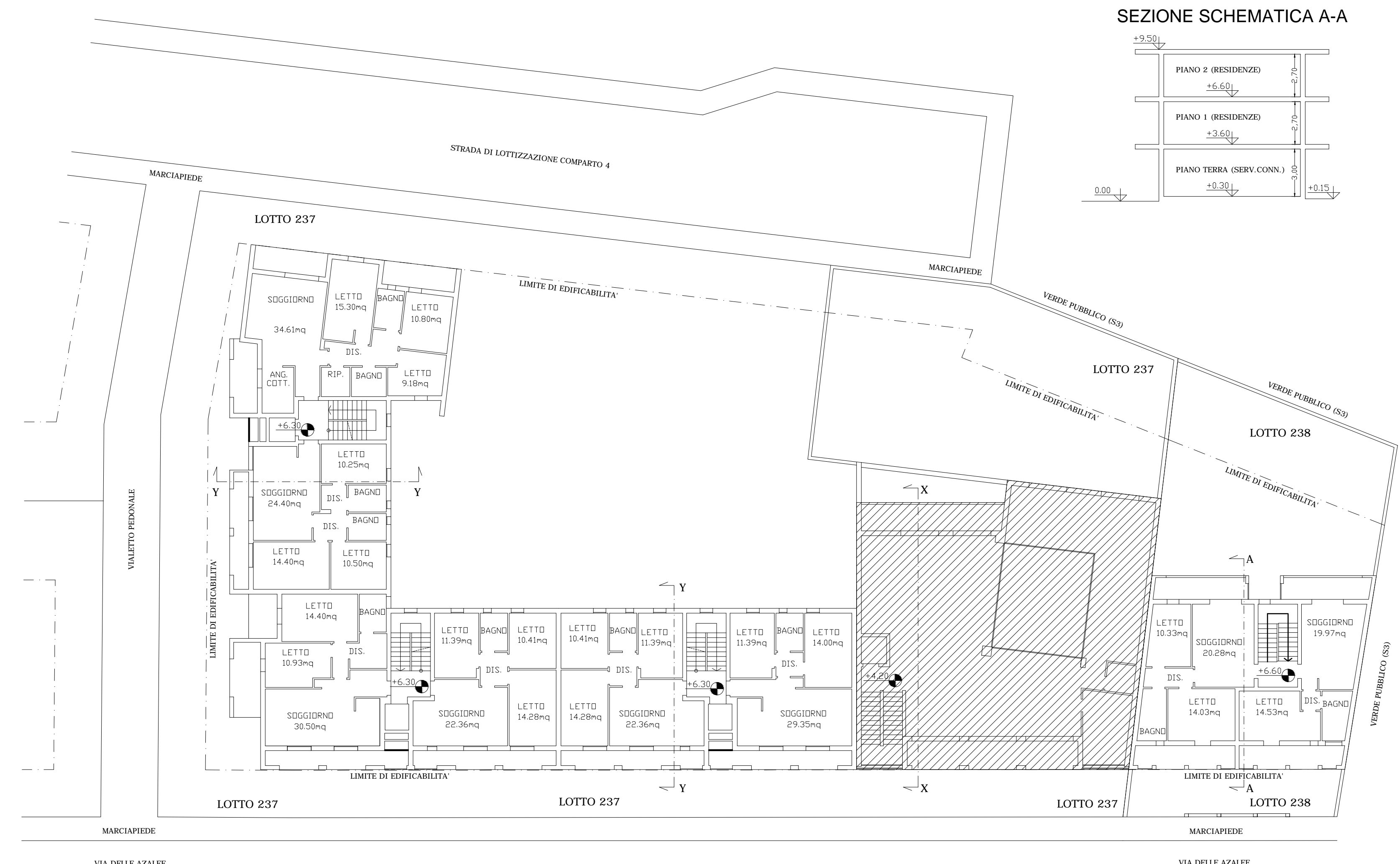
SCHEMA TIPOLOGICO PIANO TERRA



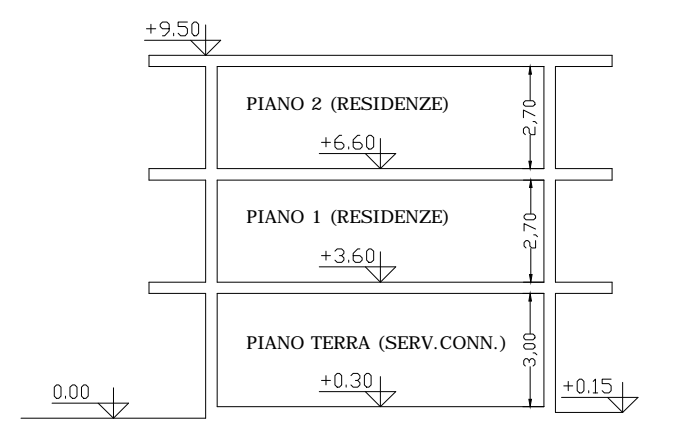
SEZIONE SCHEMATICA X-X



SCHEMA TIPOLOGICO PIANO SECONDO



SEZIONE SCHEMATICA A-A



<b>COMUNE DI SELARGIUS (CA)</b>	
<b>PROGETTO STRALCIO</b>	
<b>COMPARTO 4 - P.R.U. "SU TREMINI DE BASCIU"</b>	
<b>OGGETTO</b>	
<b>TIPO EDILIZIO LOTTI 237,238</b>	
<b>PROPRIETARI</b>	<b>TAV.</b>
FRAU AUGUSTA	<b>6</b>
MUSIU GIUSEPPE	
PAULIS RITA	
DEIDDA GIUSEPPE	
DEIDDA SALVATORE	
FANARI CLARETTA	<b>RAPP.</b>
P.M.G.P. s.r.l.	Scala 1:1000
COCCO MARCELLA e più	<b>DATA</b>
COMUNE DI SELARGIUS	Octobre 2013 Agg. Sett.2014
<b>I PROGETTISTI</b>	<b>DOTT. ING. MICHELA DEIDDA</b>
DOTT. ING. ROSSANA DEIDDA	